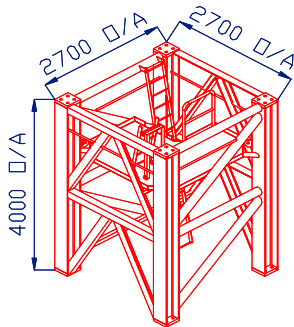


RRS
RESOLUTION
RIGGING SERVICES

M630D TOWER CRANE

TOWER TYPE
443/443R



TYPICAL LOADS	
LOAD (T)	RADIUS (m)
50	12.5
25	17.5
9	60
5.1	71.5

Technical Data Sheet

FAVELLE
FAVCO

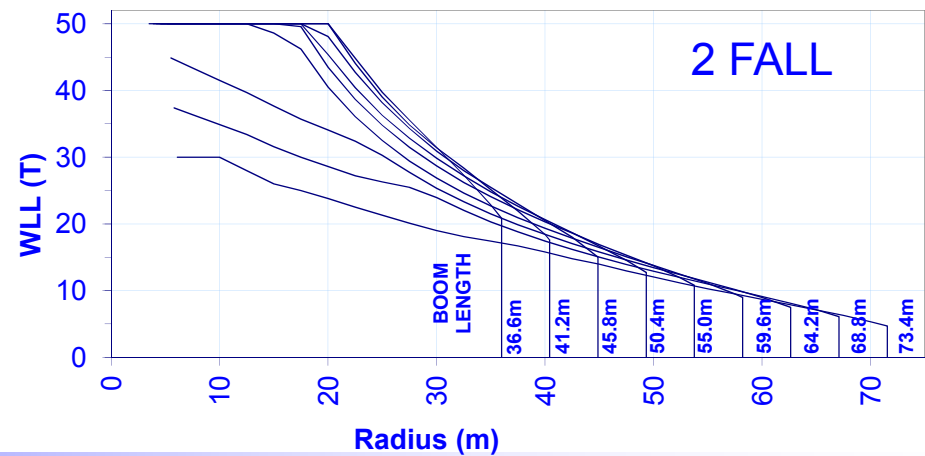
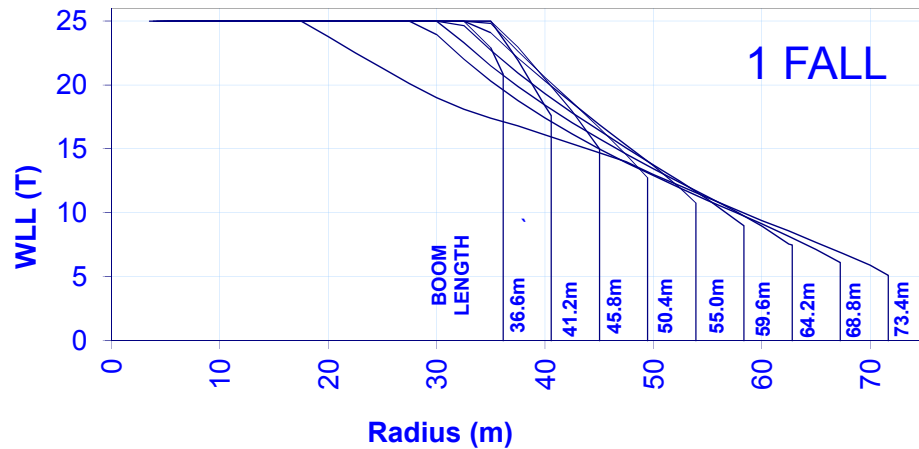
M630D RADIUS AND CAPACITY



Boom Length (m)	Max Rad. for Max WLL (m)	Min Rad. (m)	WLL at Min Rad. (T)	1 FALL																			Max Rad. (m)	WLL at Max Rad. (T)	
				Radius (metres) & Capacity (tonnes)																					
				7.5	10.0	15.0	20.0	25.0	30.0	32.5	35.0	37.5	40.0	42.5	45.0	47.5	50.0	52.5	55.0	57.5	60.0	65.0	70.0		
73.4	17.5	6.1	25.0	25.0	25.0	25.0	23.8	21.3	19.0	18.1	17.4	16.8	16.1	15.4	14.7	14.0	13.0	12.1	11.2	10.3	9.4	7.7	5.9	71.7	5.1
68.8	27.5	5.8	25.0	25.0	25.0	25.0	25.0	25.0	23.9	22.0	20.3	18.8	17.4	16.2	15.0	13.9	12.9	11.9	11.0	10.1	9.1	7.1	-	67.2	6.1
64.2	30.0	5.5	25.0	25.0	25.0	25.0	25.0	25.0	25.0	23.3	21.5	19.9	18.4	17.1	15.8	14.6	13.5	12.4	11.3	10.2	9.0	-	-	62.8	7.5
59.6	30.0	5.2	25.0	25.0	25.0	25.0	25.0	25.0	25.0	24.6	22.7	20.9	19.3	17.8	16.4	15.1	13.8	12.5	11.1	9.5	-	-	-	58.4	9.0
55.0	32.5	4.8	25.0	25.0	25.0	25.0	25.0	25.0	25.0	25.0	24.1	22.1	20.3	18.6	16.9	15.3	13.7	11.9	-	-	-	-	-	53.9	10.8
50.4	32.5	4.5	25.0	25.0	25.0	25.0	25.0	25.0	25.0	25.0	24.8	22.6	20.6	18.7	16.7	14.6	-	-	-	-	-	-	-	49.5	12.7
45.8	35.0	4.2	25.0	25.0	25.0	25.0	25.0	25.0	25.0	25.0	25.0	23.0	20.5	18.0	-	-	-	-	-	-	-	-	-	45.0	15.0
41.2	35.0	3.9	25.0	25.0	25.0	25.0	25.0	25.0	25.0	25.0	25.0	21.9	18.4	-	-	-	-	-	-	-	-	-	-	40.6	17.6
36.6	32.5	3.5	25.0	25.0	25.0	25.0	25.0	25.0	25.0	25.0	22.9	-	-	-	-	-	-	-	-	-	-	-	-	36.1	20.8

Boom Length (m)	Max Rad. for Max WLL (m)	Min Rad. (m)	WLL at Min Rad. (T)	2 FALL																			Max Rad. (m)	WLL at Max Rad. (T)	
				Radius (metres) & Capacity (tonnes)																					
				7.5	10.0	15.0	20.0	25.0	30.0	32.5	35.0	37.5	40.0	42.5	45.0	47.5	50.0	52.5	55.0	57.5	60.0	65.0	70.0		
73.4	-	6.1	30.0	30.0	30.0	26.0	23.8	21.3	19.0	18.1	17.4	16.7	15.8	14.8	13.9	12.9	12.0	11.1	10.3	9.5	8.7	7.1	5.3	71.5	4.7
68.8	-	5.8	37.4	36.4	34.9	31.6	28.6	26.3	23.9	22.0	20.3	18.8	17.4	16.2	15.0	13.9	12.9	11.9	11.0	10.1	9.1	7.1	-	67.1	6.1
64.2	-	5.5	44.9	43.4	41.5	37.7	34.1	30.3	25.4	23.3	21.5	19.9	18.4	17.1	15.8	14.6	13.5	12.4	11.3	10.2	9.0	-	-	62.7	7.5
59.6	12.5	5.2	50.0	50.0	50.0	48.6	40.5	32.5	26.9	24.6	22.7	20.9	19.3	17.8	16.4	15.1	13.8	12.5	11.1	9.5	-	-	-	58.2	9.0
55.0	15.0	4.6	50.0	50.0	50.0	50.0	43.5	34.8	28.7	26.2	24.1	22.1	20.3	18.6	16.9	15.3	13.7	11.9	-	-	-	-	-	53.8	10.8
50.4	17.5	4.5	50.0	50.0	50.0	50.0	45.4	36.3	29.9	27.2	24.8	22.6	20.6	18.7	16.7	14.6	-	-	-	-	-	-	-	49.3	12.7
45.8	17.5	4.2	50.0	50.0	50.0	50.0	48.1	38.2	30.9	28.0	25.5	23.0	20.5	18.0	-	-	-	-	-	-	-	-	-	44.9	15.0
41.2	20.0	3.9	50.0	50.0	50.0	50.0	50.0	39.0	31.4	28.3	25.1	21.9	18.4	-	-	-	-	-	-	-	-	-	-	40.4	17.6
36.6	20.0	3.5	50.0	50.0	50.0	50.0	50.0	39.7	31.5	27.3	22.9	-	-	-	-	-	-	-	-	-	-	-	-	36.0	20.8

LOAD CHARTS



HOIST SPEEDS



- 260kW 25T WINCH

Variable Hoist Speeds Calculated on 3rd Layer

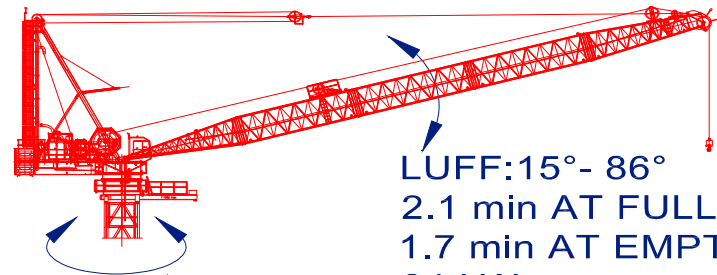
Motor P.O.R. Setting (Bar): 245

Max. Gearbox Input Speed (rpm): 3100

Available Engine Power (kW):320

Load (T)	Hook Speed Power (m/min)	Motor Power (kW)	Motor Speed (rpm)
3.7	203.7	254	3100
6	140.0	254	2130
10	91.3	254	1389
16	60.0	254	913
20	48.8	254	743
25	39.6	254	603

LUFF AND SLEW SPEEDS



LUFF:15°- 86°
 2.1 min AT FULL LOAD
 1.7 min AT EMPTY HOOK
 84 kW

SLEW:0.82rpm
 74 kW



RRS BRAND NEW Favelle Favco M630D Safety and Efficiency Systems

- **25 Tonne single fall ponder weight.**
- **Option for 50 Tonne double fall**
- **Hoist speed of 203.7 metres per minute with up to 3.7 tonne on the hook.**
- **A very fast crane with extremely fast cycle times compared to electric counterparts.**
- **Up to 60m free standing tower height.**
- **Low Rotation Diepa 36mm hoist rope.**
- **Diepa hoist rope is classified as one of the best wire rope manufacturers in the world.**
- **Safe load indicator, hook height indicator, Wind speed indicator**
- **E-log system to protect from overloading, also measuring oil and water**
- **Fire suppressant system with automatic battery isolator and engage switch inside the crane cabin in reach of operator at all times.**
- **Sound proofing on powerpack with extra quiet swirl type exhaust.**
- **Square boom, allows for clients signage to be seen easier and more effective than triangle shaped booms.**
- **The Favelle Favco M630D is available with optional Anti Collision and zoning program.**
- **Blokcam X2 system compatible.**
- **The Favelle Favco M630D can be rented with a Blokcam system within the crane. The operator has the ability to see his load at all times and eliminates blind spots. The footage can also be live streamed remotely to the clients phone or computer. Footage is stored for up to 30 days.**
- **The M630D diesel motor is much more fuel efficient than any generator that would be required to run an electric type tower crane.**

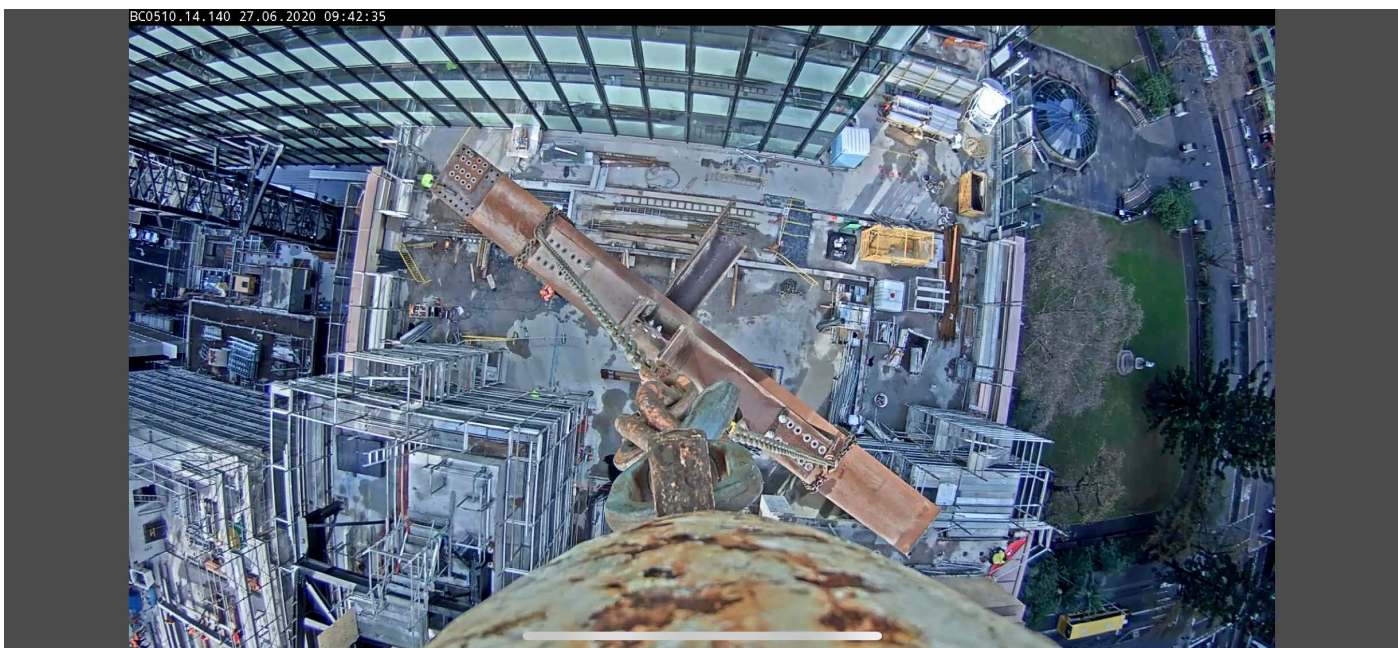


Blokcam X2 System on Favelle Favco Crane

View for the operator

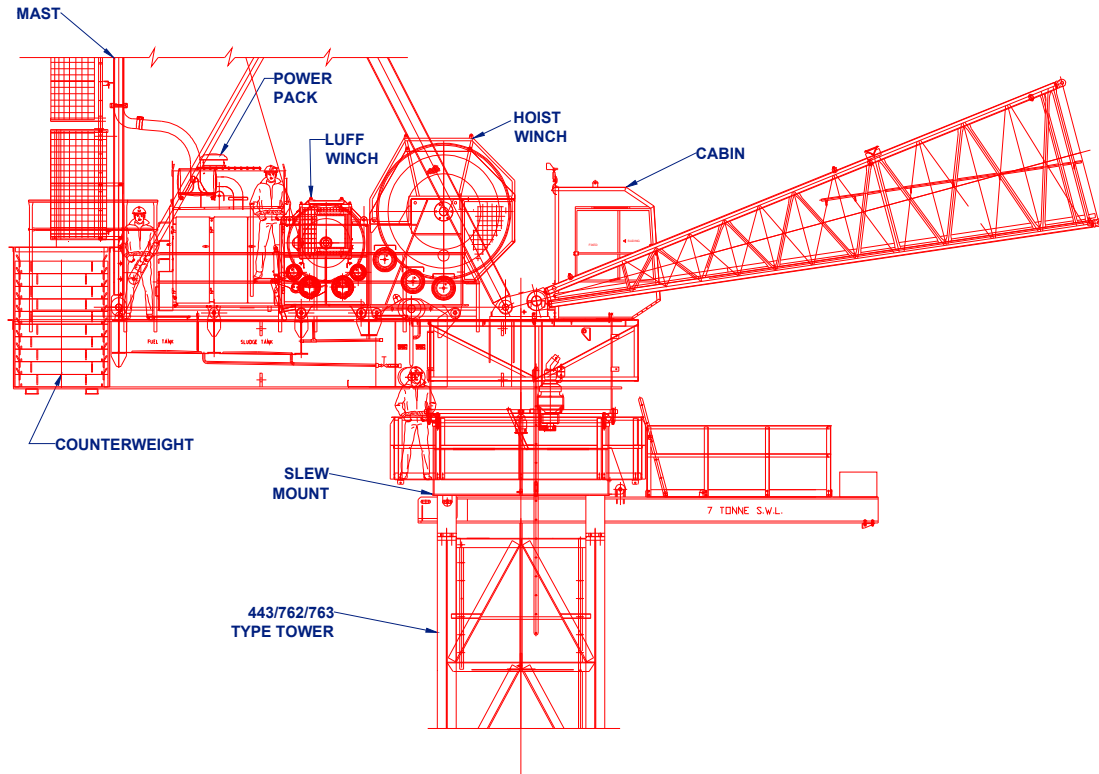


View from Phone or computer

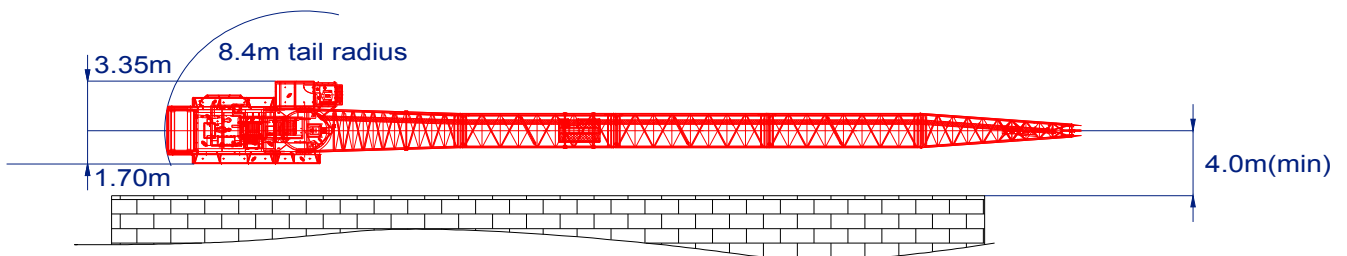


To find out more, call Rhys on 0423 488 642

MACHINERY DECK ASSEMBLY



EXTERNAL CLIMBING
INSTALLATION CLEARANCE



OUT OF SERVICE CONFIGURATION

Boom Length (m)	RECCOMENDED OUT OF SERVICE PARKED RADIUS	
	Radius (m)	Angle (°)
73.4	19.8	74.6
68.8	25.1	68.9
64.2	26.5	65.9
59.6	28.1	62.2
55.0	29.0	58.5
50.4	26.3	58.9
45.8	23.6	59.4
41.2	20.9	60.0
36.6	18.0	61.0

*:MAX OUT OF SERVICE WIND SPEED = 42 m/s

M630D TRANSPORTATION & ERECTION



ITEM	QTY	DESCRIPTION		LENGTH L (mm)	HEIGHT H (mm)	WIDTH W (mm)	WEIGHT PER ITEM (kg)
1	1	SPLIT DECK-FRONT (INCL. SLEW DRIVE, PINS, PLATFORMS & HANDRAILS)		3370	1970	3350	7900
2	1	SPLIT DECK-REAR (INCL. PLATFORMS & HANDRAILS)		6500	1430	3340	8700
3	2	MAST FRONT LEG		12685	520	490	1564
	1	MAST HEAD		1118	1171	904	792
	2	MAST BACK LEG		11569	247	439	512
	1	BUFFER		3596	216	2835	373
		MAST ASSEMBLY (INC. SHEAVES, HEAD PIN, LADDERS, BUFFER AND PLATFORMS)					7766
4	1	CABIN & PLATFORM ASSEMBLY		4600	2656	1965	2200
5	1	16T POWER PACK HOIST AND LUFF ASSY (NO ROPE) (INCL 900kg OF OIL)		3438	2955	2622	7710
6	1	MAIN HOIST WINCH ASSEMBLY (EMPTY DRUM) (600m ROPE CAPACITY)		1800	2050	1990	6710
7	1	BOOM BOTTOM 13.7m (INC. WALKWAY&PINS)		13913	2416	3052	2530
8	1	BOOM TOP 13.7m (INC. DEFLECTOR, SHEAVES & PINS) (PENDANT & PLATFORM)		14455	3806	2416	3030
9	5	BOOM EXTENSION 9.2m (BRIDLE PLATFORM 203 kg)		9316	2589	2416	1473 (1743)
10	1	BRIDLE		1765	1095	1160	596
11	1	SLEW MOUNT (INCL. PLATFORMS 556Kg)		3512	1817	3310	5610
	1	SLEW RING (INCL. BOLTS)		3100 DIA.	175		2301
		Total					82274
12	1	EXTERNAL CLIMBER		TBA	TBA	TBA	TBA
13	1	MONORAIL		7870	1650	650	3184
14	7	COUNTER WEIGHT		3100	2100	1410	7300
15	1	HOOK - 2/1 FALL (50/25T)		2284	400	1170	1390
16	1	TOWER SECTION 443 (INC.LADDER,HAND RAIL,PLATFORM)		2727	2711	4000	5800
17	1	TOWER SECTION 762 (INC.LADDER,HAND RAIL,PLATFORM)		2721	2709	4000	4700
18	1	TOWER SECTION 763 (INC.LADDER,HAND RAIL,PLATFORM)		3027	3011	4006	7500
19	1	HOIST ROPE 25T (36mm) @ 6.5kg/m		600m			4056
21	1	LUFF ROPE (32mm) @ 4.9kg/m		170m			870
22	1	PENDANT ROPE (45mm) @ 9.7kg/m		108m			1090