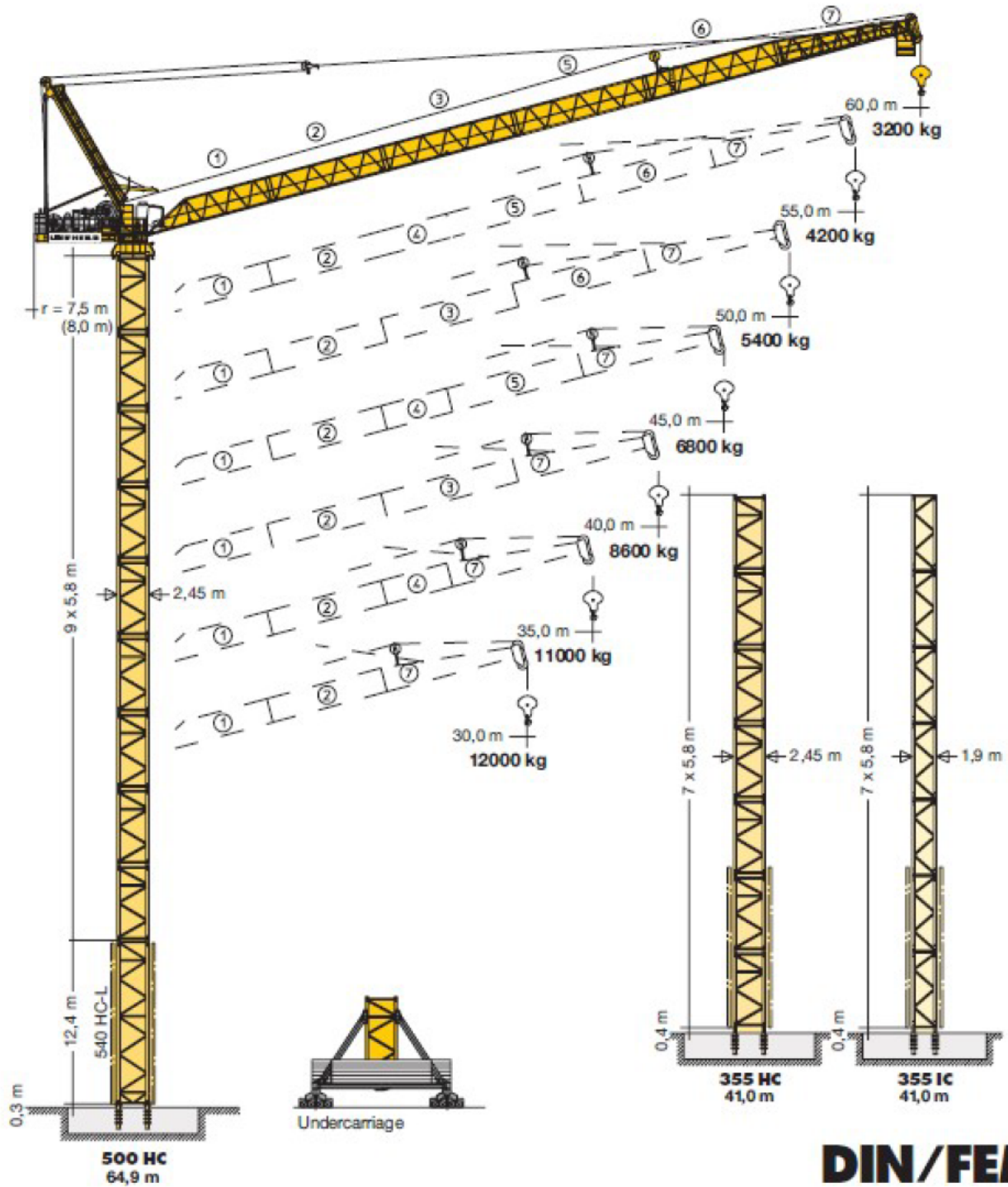


# LIEBHERR

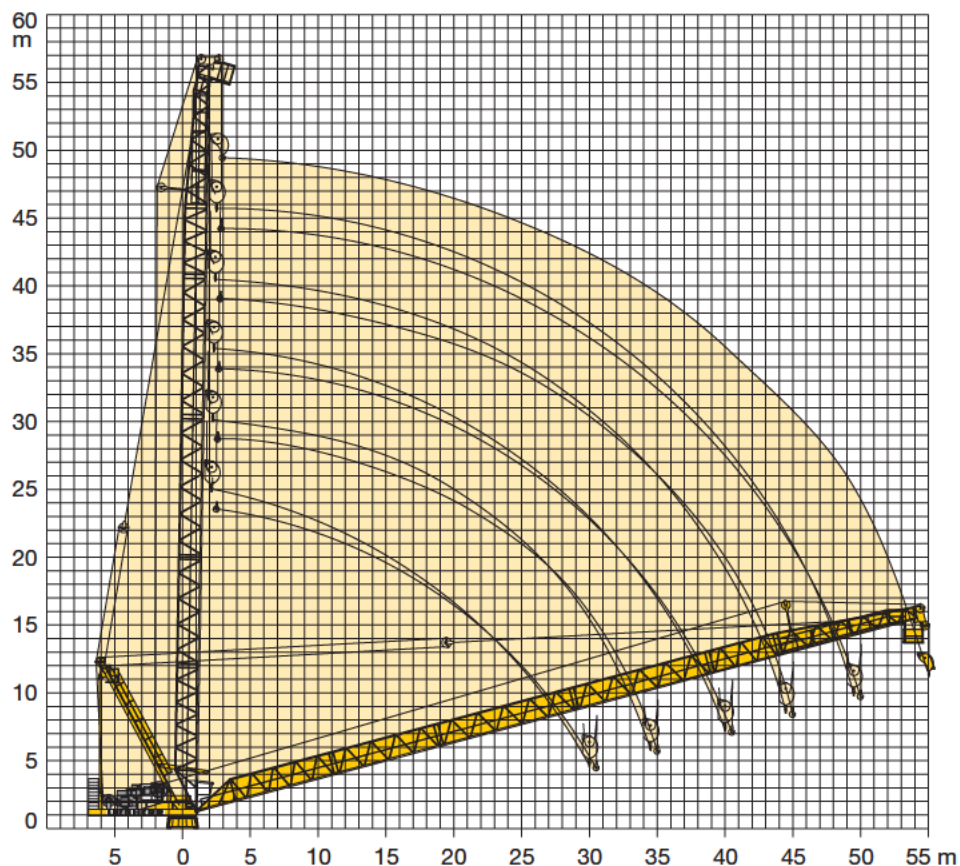
## 280 HC-L 12/24 Litronic®



**RRS**  
RESOLUTION  
RIGGING SERVICES

6-8 Resolution Dr (P O Box 1396) Unanderra NSW 2526  
Ph: 02 4271 4343 Fax: 02 4271 4746 Mobile: 0412 591 833  
ABN: 50 095 255 628 ACN: 095 255 628

# Radius and Hoisting Height



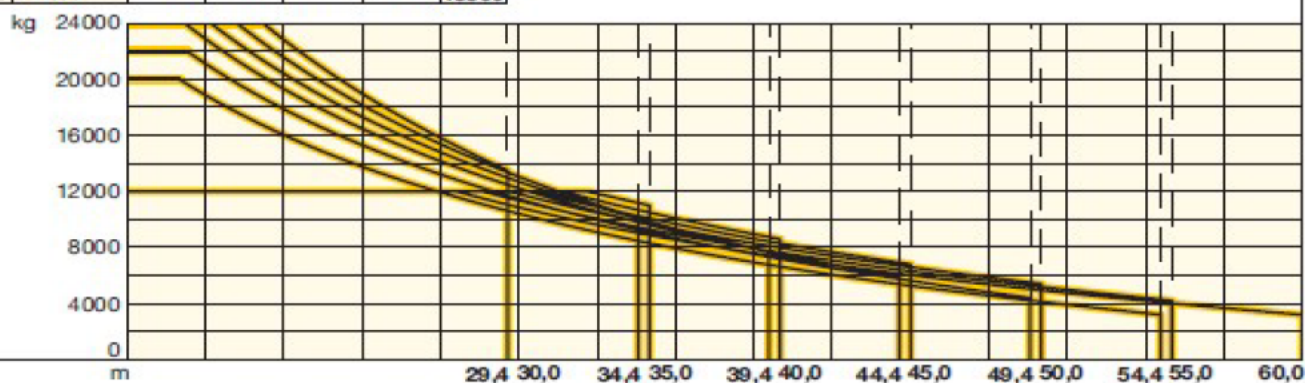
## Tower Heights

	355 HC		500 HC			500HC			355 IC		
	30,0 m	45,0 m	30,0 m	45,0 m	55,0 m	30,0 m	40,0 m	50,0 m	30,0 m	40,0 m	55,0 m
	35,0 m	55,0 m	35,0 m	45,0 m	60,0 m	35,0 m	45,0 m	60,0 m	30,0 m	50,0 m	60,0 m
	40,0 m	60,0 m	40,0 m	50,0 m	60,0 m	35,0 m	45,0 m	60,0 m	30,0 m	50,0 m	60,0 m
11	-	-	64,2*	-	-	76,5*	-	-	-	-	-
10	-	-	58,4	58,4*	-	70,7	70,7*	-	-	-	-
9	-	-	52,6	52,6	52,6*	64,9	64,9	64,9*	52,6*	-	-
8	46,8*	-	46,8	46,8	46,8	59,1	59,1	59,1	46,8	46,8*	-
7	41,0	41,0*	41,0	41,0	41,0	53,3	53,3	53,3	41,0	41,0	41,0*
6	35,2	35,2	35,2	35,2	35,2	47,5	47,5	47,5	35,2	35,2	35,2
5	29,4	29,4	29,4	29,4	29,4	41,7	41,7	41,7	29,4	29,4	29,4
4	23,6	23,6	23,6	23,6	23,6	35,9	35,9	35,9	23,6	23,6	23,6
3	17,8	17,8	17,8	17,8	17,8	30,1	30,1	30,1	17,8	17,8	17,8
2	12,0	12,0	12,0	12,0	12,0	24,3	24,3	24,3	12,0	12,0	12,0
1	6,2	6,2	6,2	6,2	6,2	18,5	18,5	18,5	6,2	6,2	6,2
0	0,4	0,4	0,4	0,4	0,4	12,7	12,7	12,7	0,4	0,4	0,4
	m		m			m			m		

\* Out of operation, jib position 15° - 70°.

# Radius and Capacity

m	m/kg	m/kg										
		18,0	21,0	24,0	27,0	30,0	35,0	40,0	45,0	50,0	55,0	60,0
60,0	4,0-27,6 12000	12000	12000	12000	12000	10860	8880	7320	6030	4950	4020	3200
55,0	4,0-28,6 12000	12000	12000	12000	12000	11330	9280	7650	6310	5180	4200	
	4,0-17,0 20000	18870	16030	13770	11930	10400	8310	6640	5270	4110	54,4 m 3200	
50,0	4,0-29,6 12000	12000	12000	12000	12000	11810	9680	7980	6590	5400		
	4,0-17,3 22000	21110	17870	15310	13210	11460	9080	7180	5620	49,4 m 4400		
45,0	4,0-30,6 12000	12000	12000	12000	12000	12000	10070	8290	6800			
	4,0-17,2 24000	22800	19300	16470	14160	12230	9600	7500	44,4 m 5900			
40,0	4,0-31,6 12000	12000	12000	12000	12000	12000	10480	8600				
	4,0-18,2 24000	24000	20400	17320	14800	12690	9830	39,4 m 7700				
35,0	4,0-32,6 12000	12000	12000	12000	12000	12000	11000					
	4,0-19,2 24000	24000	21560	18160	15380	13050	34,4 m 10100					
30,0	4,0-30,0 12000	12000	12000	12000	12000	12000						
	4,0-20,2 24000	24000	22820	18970	15820	29,4 m 13500						



Lifting capacities valid up to 100 m hoisting height. Over 100 m hoisting height, the lifting capacity is reduced by the additional rope weight.

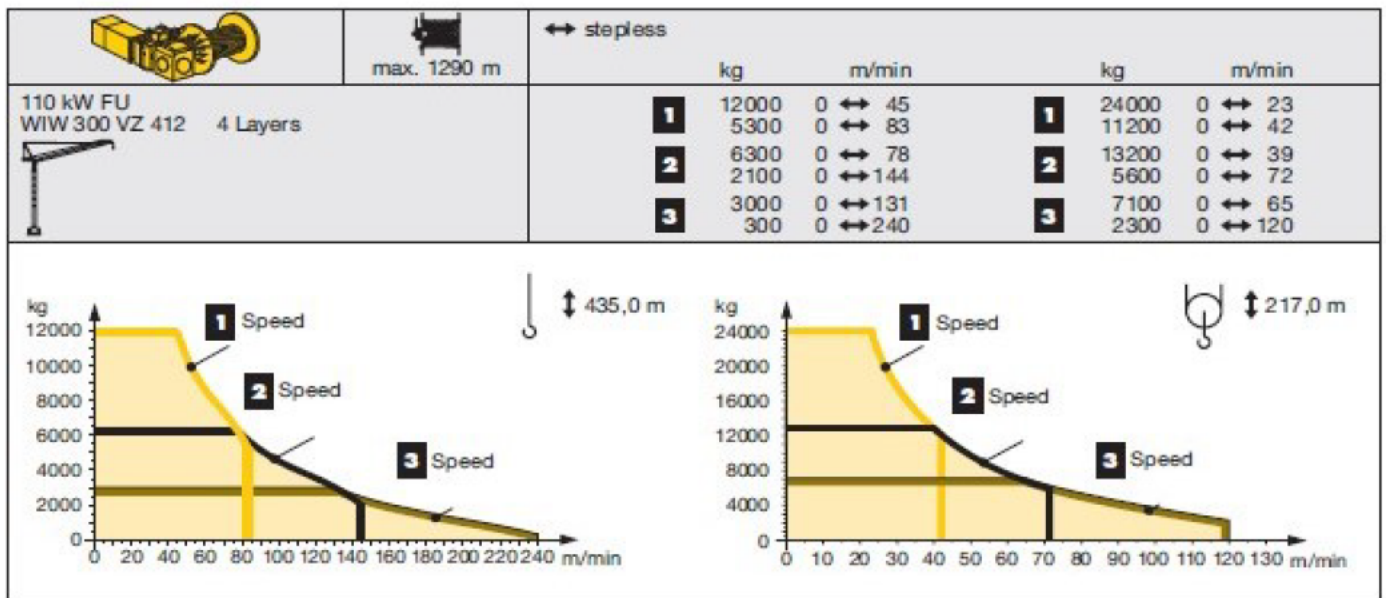
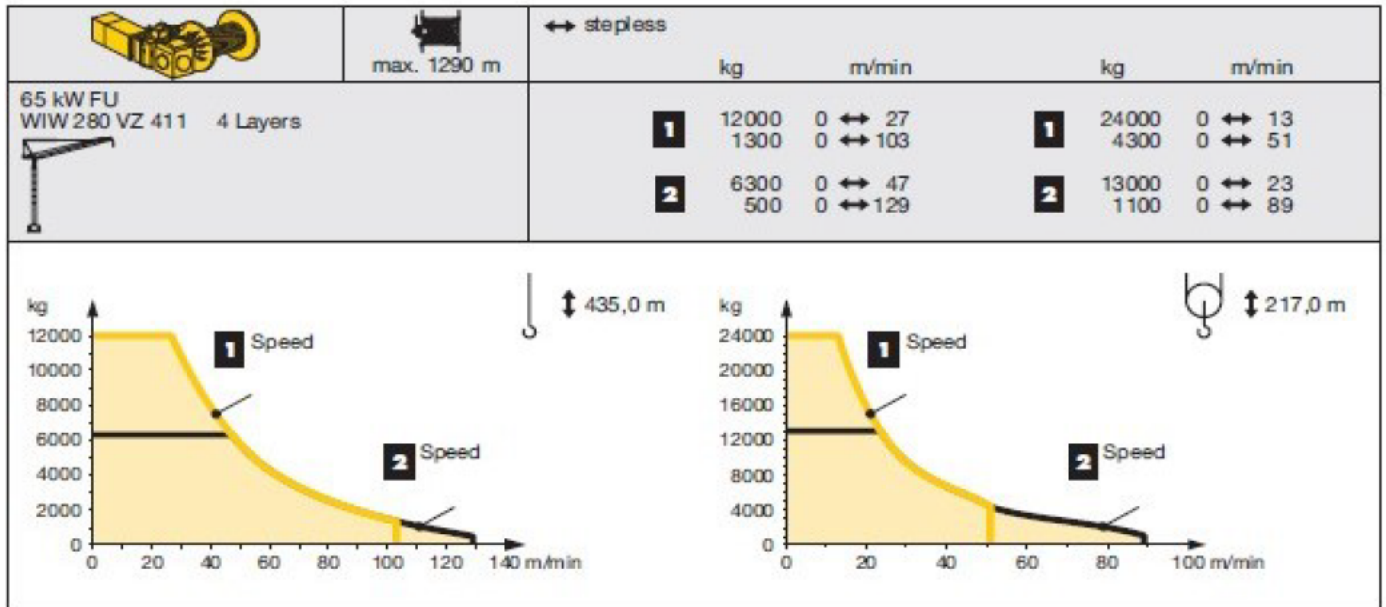
## Driving Units

	0 ↔ 0,7 U/min sl./min tr./min	2 x 7,5 kW FU
	2,8 min 2,2 min 1,8 min	45 kW FU 65 kW FU 110 kW FU
	Undercarriage on request	

	65 kW FU	110 kW FU	110 kW FU
	65 kW FU	65 kW FU	110 kW FU
<b>kVA</b>	143,0	185,0	226,0

kVA can be reduced in case of too little power of the mains, see instruction manual.

# Driving Units - Litronic



# Climbing in the Building

## Radius and Tower Height

		355 IC					
n							
	30,0 m	35,0 / 40,0 / 45,0 / 50,0 m	55,0 / 60,0 m	30,0 m	35,0 / 40,0 / 45,0 / 50,0 m	55,0 / 60,0 m	
8	52,6	-	-	52,2	-	-	
7	46,8	46,8	-	46,4	46,4	-	
6	41,0	41,0	41,0	40,6	40,6	40,6	
5	35,2	35,2	35,2	34,8	34,8	34,8	
4	29,4	29,4	29,4	29,0	29,0	29,0	
3	23,6	23,6	23,6	23,2	23,2	23,2	
2	17,8	17,8	17,8	17,4	17,4	17,4	
1	12,0	12,0	12,0	11,6	11,6	11,6	
0	m 6,2	6,2	6,2	m 5,8	5,8	5,8	





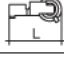






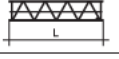
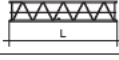

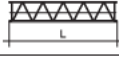
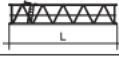

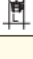

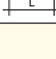
		500 HC					
n							
	30,0 / 35,0 m	40,0 / 45,0 / 50,0 m	55,0 / 60,0 m	30,0 / 35,0 m	40,0 / 45,0 / 50,0 m	55,0 / 60,0 m	
10	-	-	-	69,6	-	-	
9	64,2	-	-	63,8	63,8	-	
8	58,4	58,4	-	58,0	58,0	58,0	
7	52,6	52,6	52,6	52,2	52,2	52,2	
6	46,8	46,8	46,8	46,4	46,4	46,4	
5	41,0	41,0	41,0	40,6	40,6	40,6	
4	35,2	35,2	35,2	34,8	34,8	34,8	
3	29,4	29,4	29,4	29,0	29,0	29,0	
2	23,6	23,6	23,6	23,2	23,2	23,2	
1	17,8	17,8	17,8	17,4	17,4	17,4	
0	m 12,0	12,0	12,0	m 11,6	11,6	11,6	

Out of operation, jib position 15° - 70° / Hors service, position

\* Min. anchoring height may deviate at max. tower height resp. hook height > 100 m.

# Components List

Upper Crane			L (m)	B (m)	H (m)	kg*	
Item Qty.	Slewing platform with slewing ring support		355 IC	2,97	2,32	2,56	9290
			500 HC	3,05	2,32	2,57	11350
2 1	Machinery platform with luffing and hoist gear**			6,74	2,45	2,94	15850
3 1	Machinery platform with luffing gear, without hoist gear			6,74	2,18	2,48	11430
4 1	Hoist gear unit**	110 kW 		2,98	2,46	1,30	4420
5 1	Cabin with platform			5,24	1,94	2,55	1850
6 1	Side platform			2,15	1,17	0,77	100
7 1	Side platform			3,77	0,90	0,82	180
8 1	Side platform			5,41	1,10	0,82	270
9 1	Jib retaining frame			11,95	2,20	2,34	5180
10 1	Jib heel section			11,23	1,87	2,04	① 1750
11 1	Intermediate jib section			9,20	1,83	1,98	② 1360
12 1	Intermediate jib section			10,55	1,83	1,98	③ 1500
13 1	Intermediate jib section			5,18	1,83	1,98	④ 850
14 1	Intermediate jib section			10,35	1,83	1,98	⑤ 1330
15 1	Intermediate jib section			10,35	1,83	2,32	⑥ 1430
16 1	Jib head section			11,23	2,23	2,46	⑦ 2720
17 1	Bottom hook block			1,45	0,74	1,90	1460
<b>Ballast</b>							
18 1	Steel ballast			4,40	0,31	0,88	4870
19 1	Steel ballast			4,40	0,27	0,88	2940
<b>Small parts</b>							
20 1	Ropes, small parts					4500	

Single weights.

\*\* Hoist gear without secondary brake

Subject to alterations!

This information is supplied without liability.