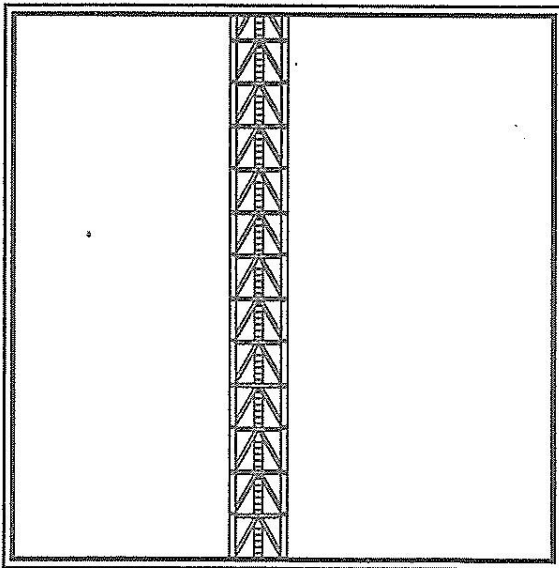


# M235DX CONSTRUCTION TOWER CRANE



---

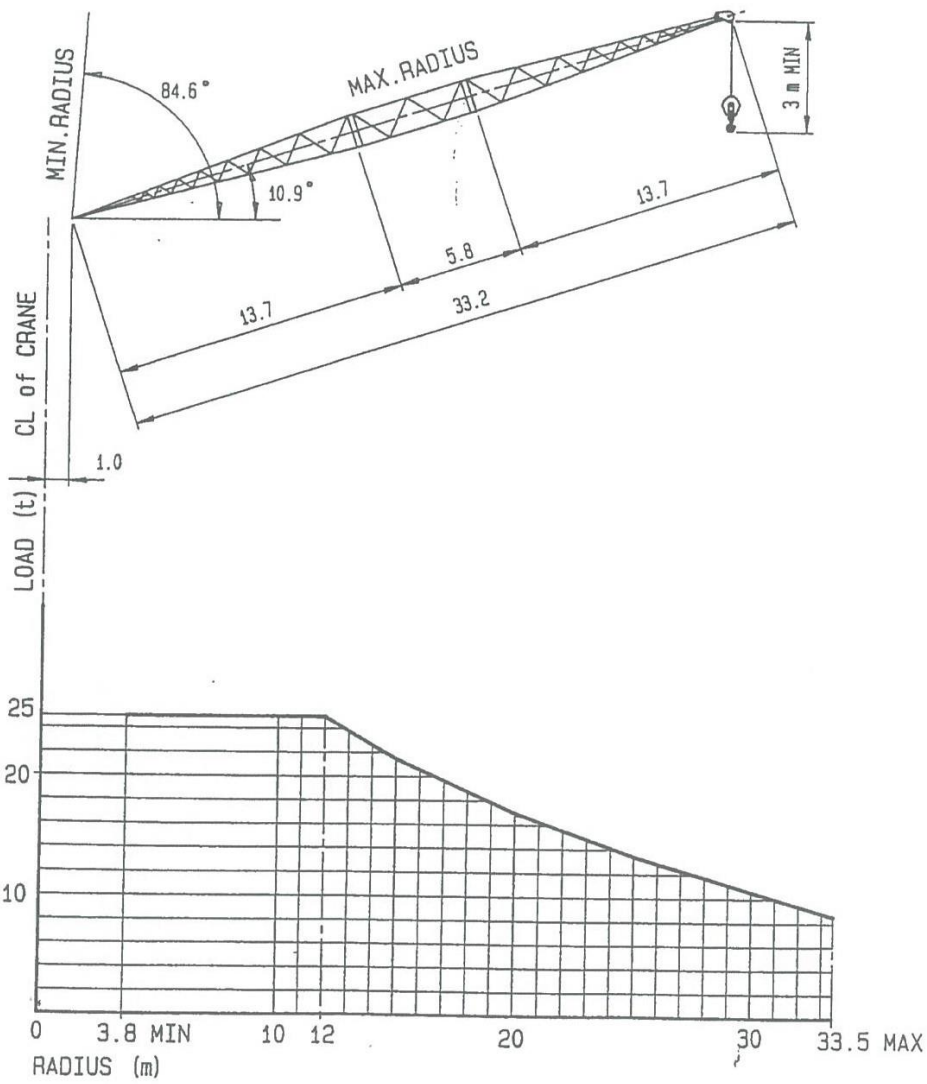
Technical Data Sheet

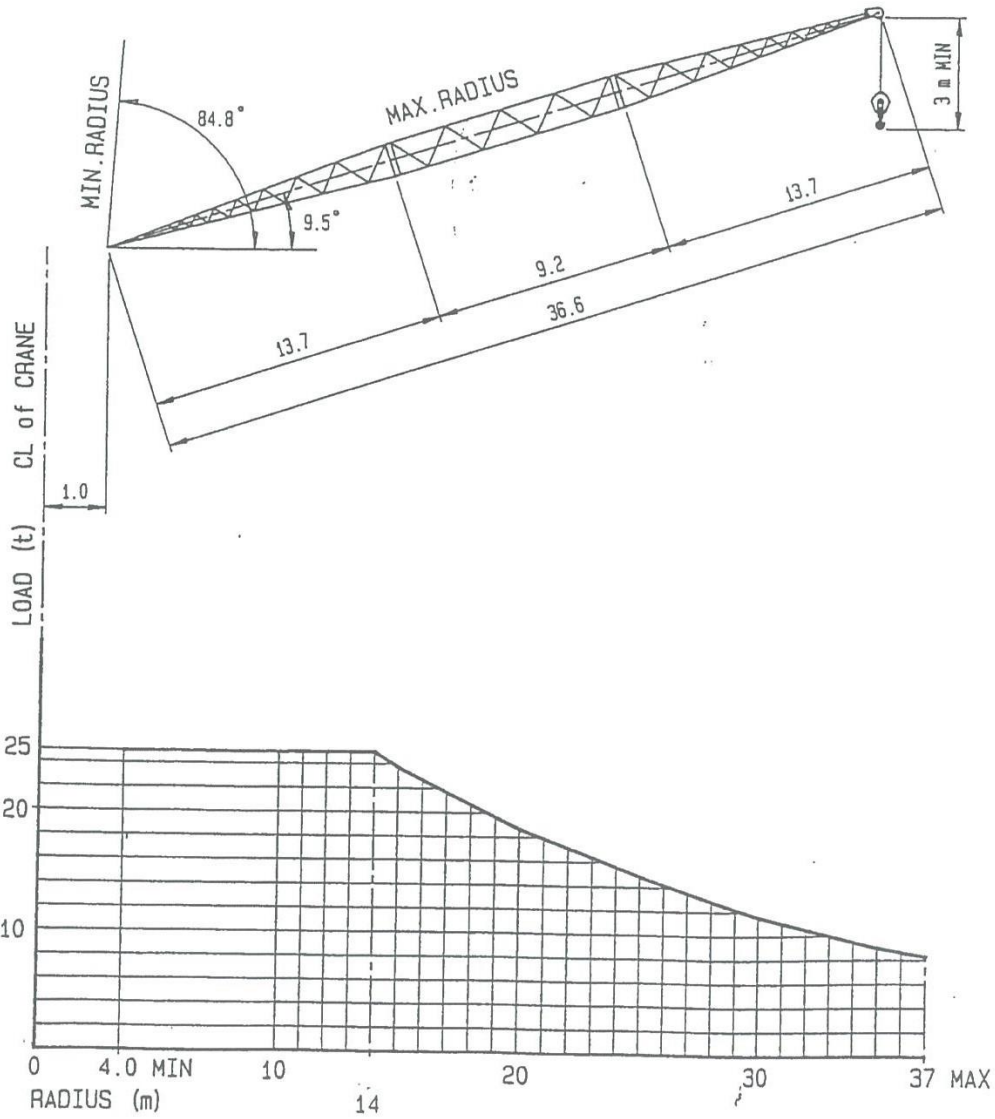
---

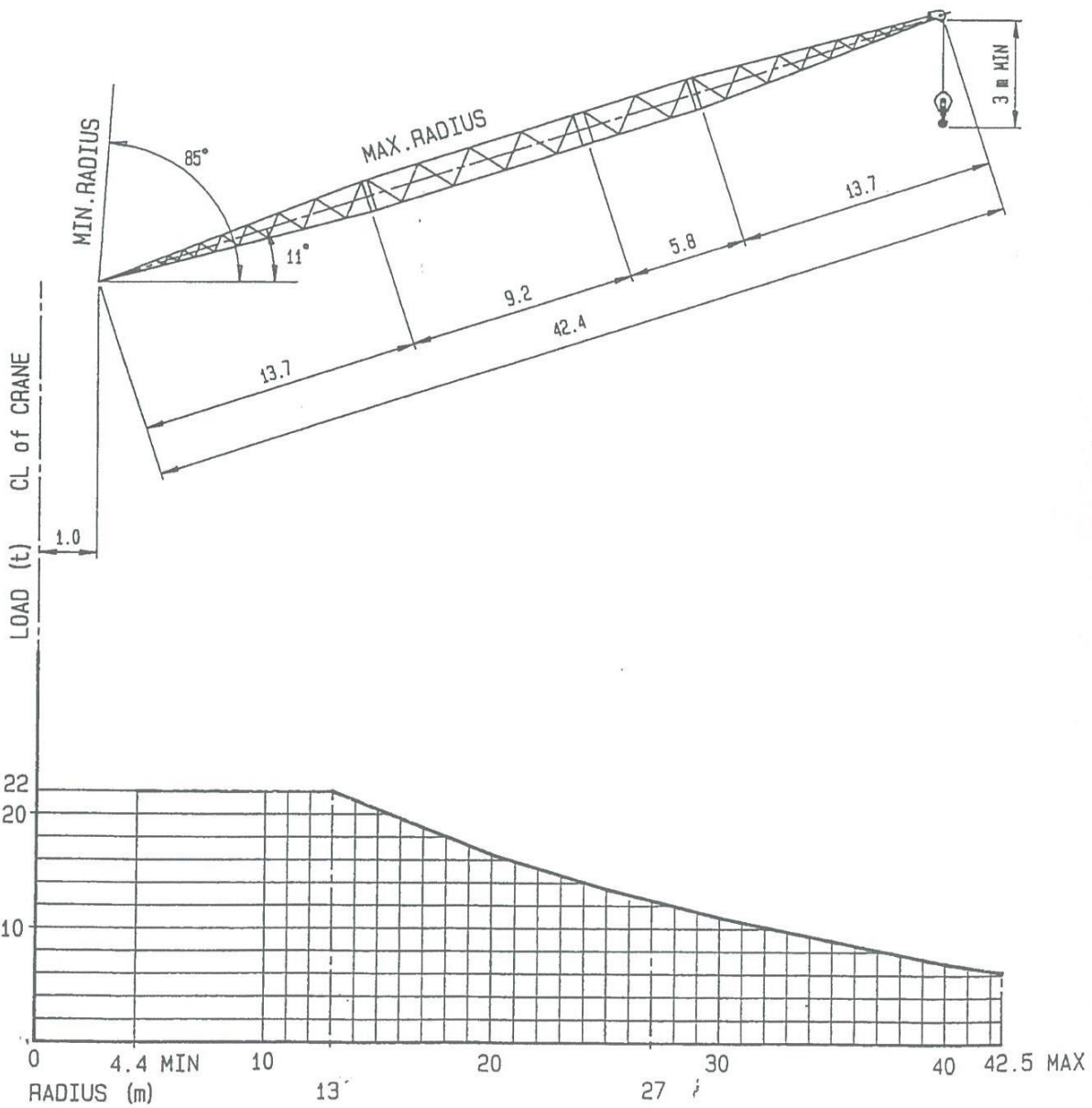
**FV/ELLE**  
**FAVCO**

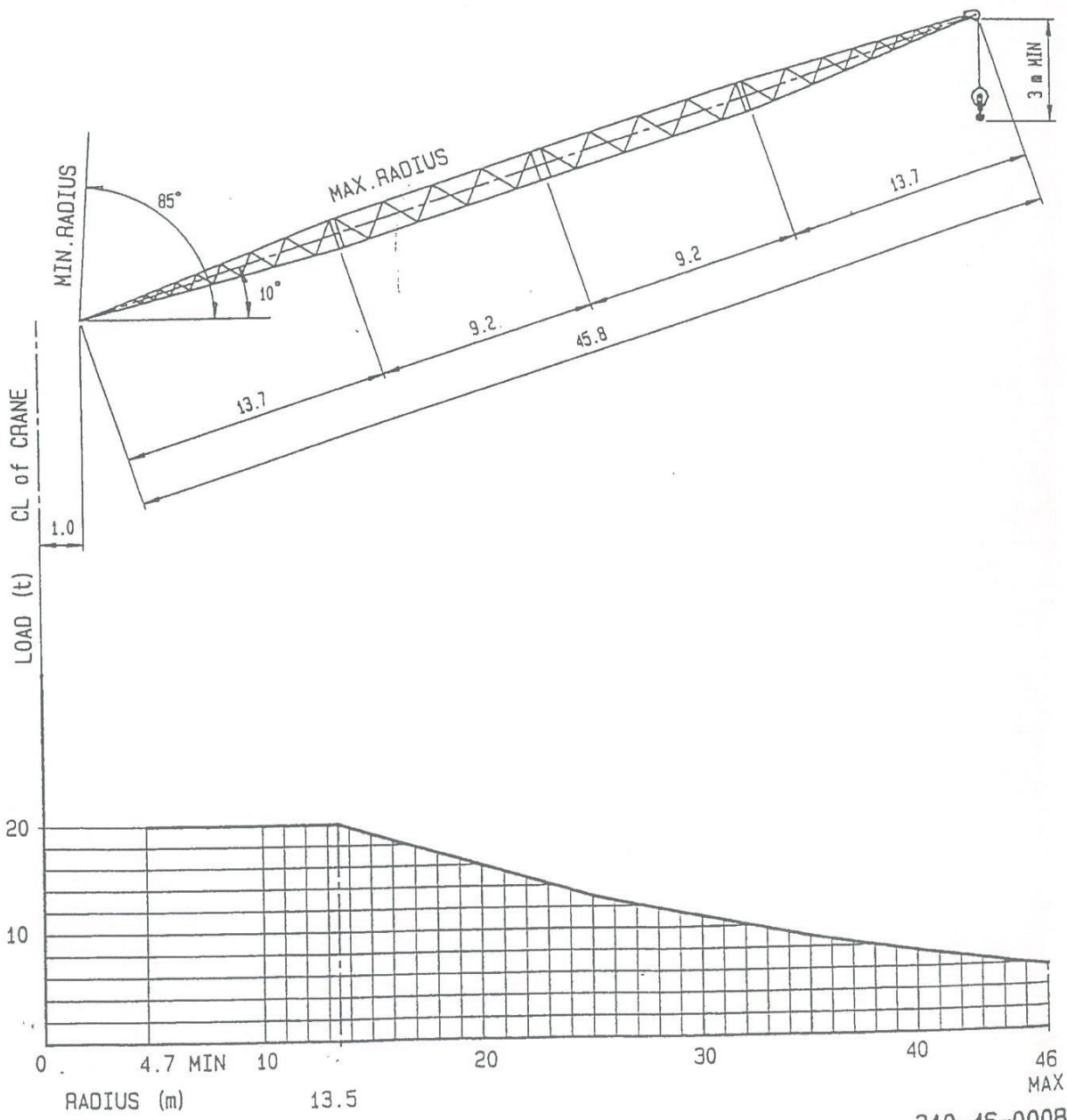


A subsidiary of Muhibbah Engineering (M) BHD





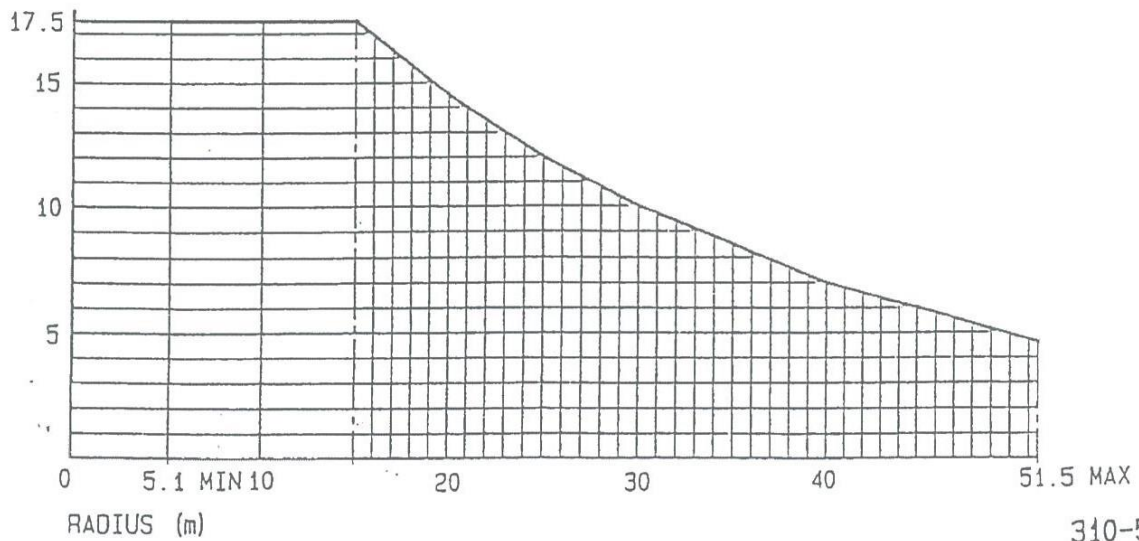
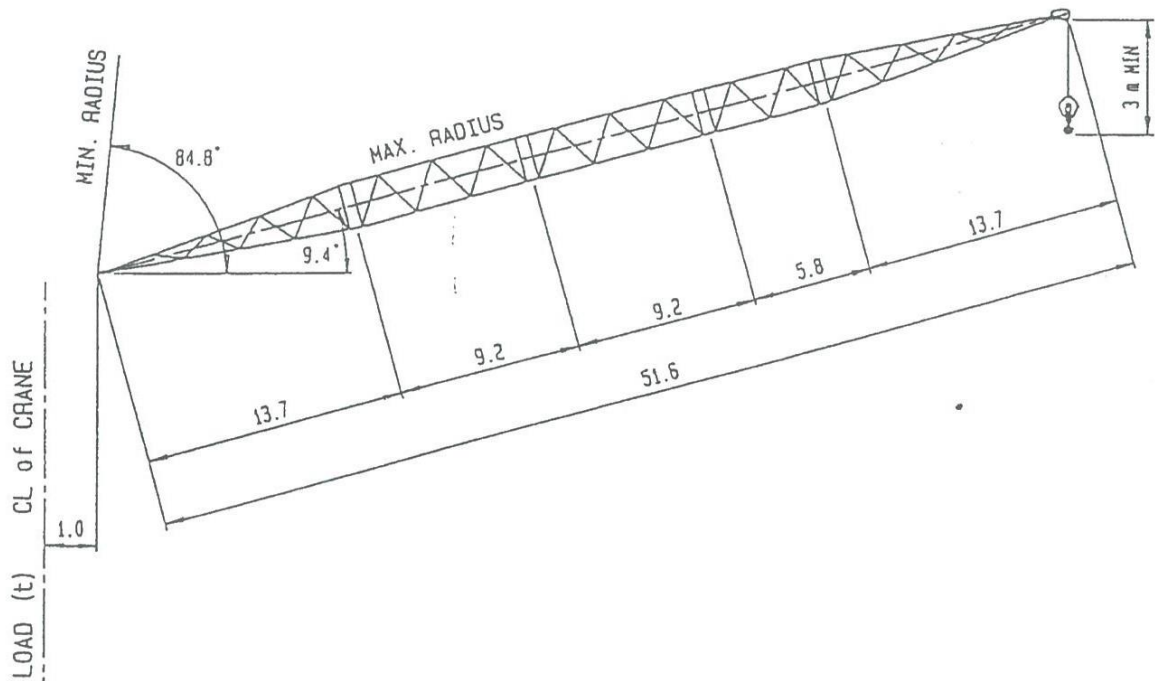




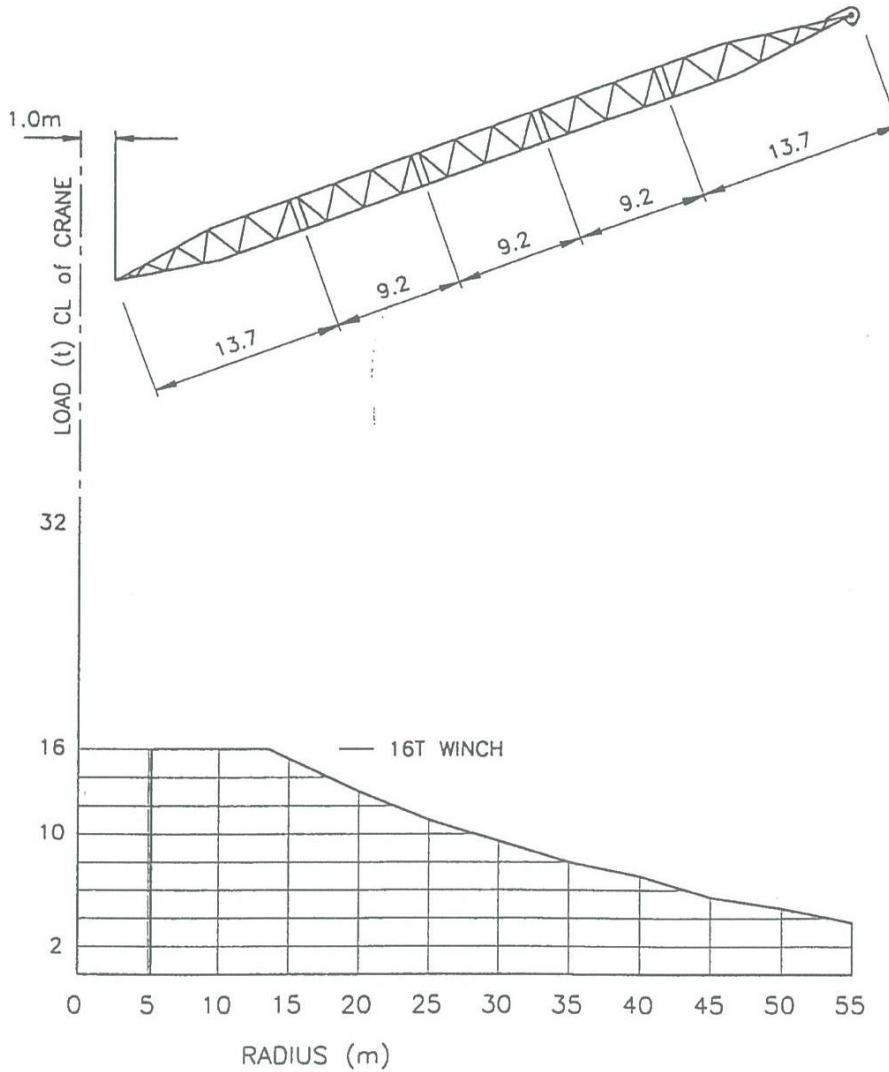


LOAD CHART M235DX

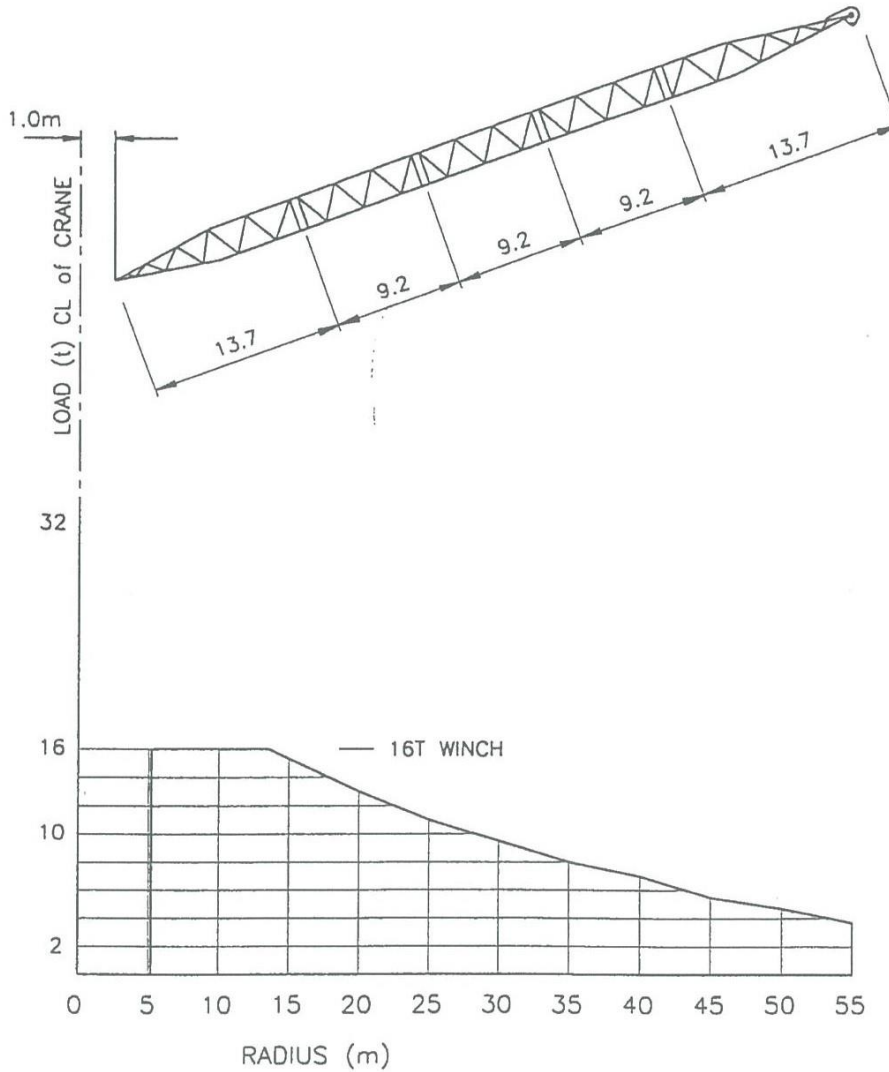
BOOM LENGTH 51.6 m



310-52-000B

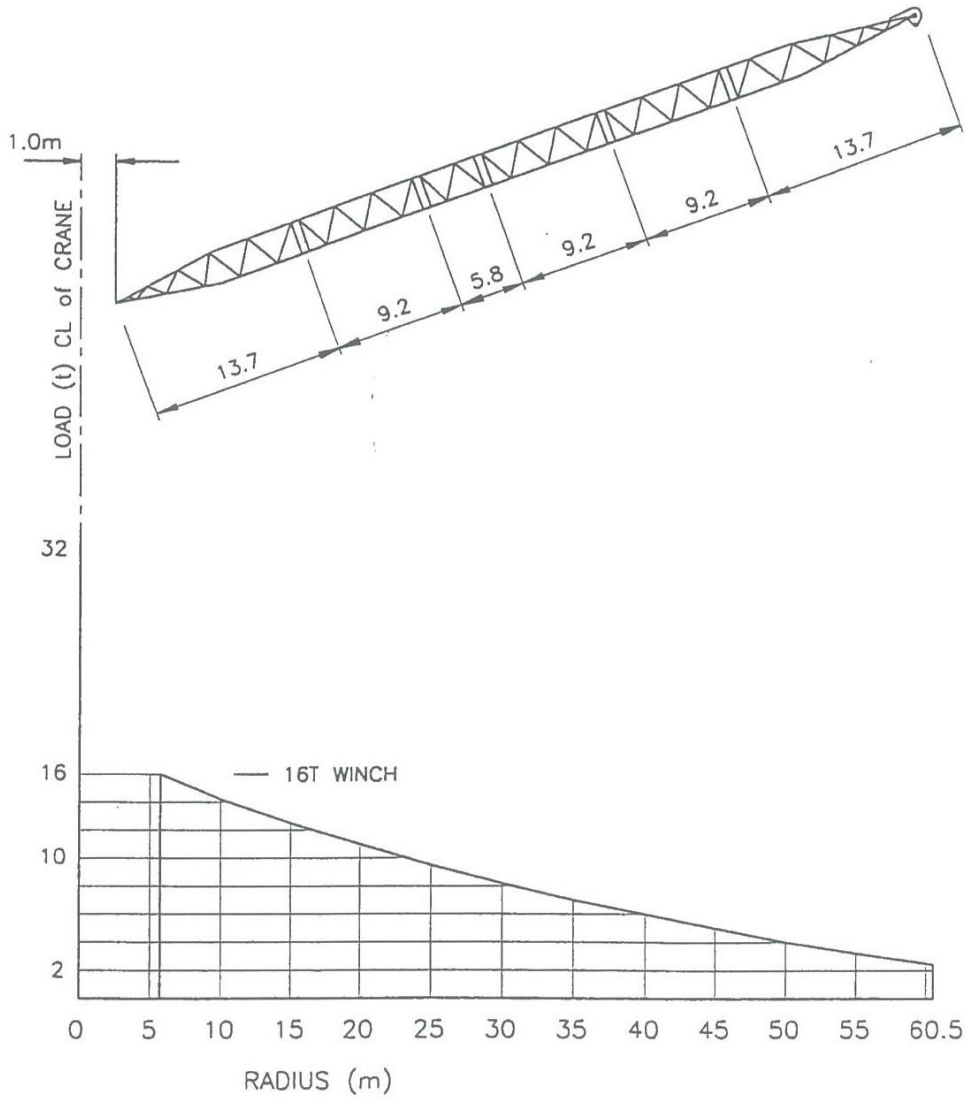


LOAD CHART 55.0m RADIUS BOOM											
RADIUS (M)	5.2	10.0	13.5	20.0	25.0	30.0	35.0	40.0	45.0	50.0	55.0
LOAD (T)	16.0	16.0	16.0	13.0	11.0	9.5	8.0	7.0	5.5	4.7	3.7
ANGLE	86.0	81.9	77.1	72.2	67.2	62.0	56.4	50.5	44.1	36.8	27.8

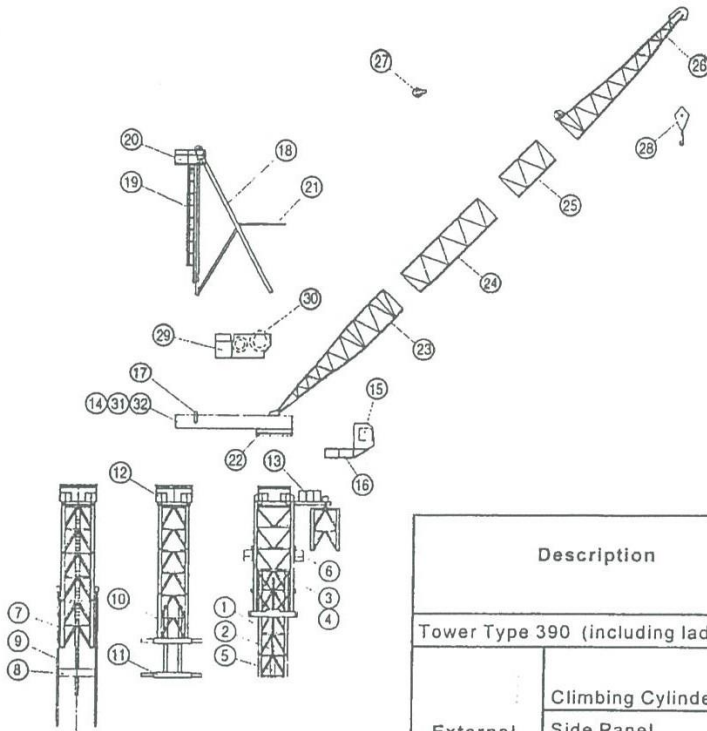


LOAD CHART 55.0m RADIUS BOOM											
RADIUS (M)	5.2	10.0	13.5	20.0	25.0	30.0	35.0	40.0	45.0	50.0	55.0
LOAD (T)	16.0	16.0	16.0	13.0	11.0	9.5	8.0	7.0	5.5	4.7	3.7
ANGLE	86.0	81.9	77.1	72.2	67.2	62.0	56.4	50.5	44.1	36.8	27.8





LOAD CHART 60.5m RADIUS BOOM												
RADIUS (M)	5.7	10.0	15.0	20.0	25.0	30.0	35.0	40.0	45.0	50.0	55.0	60.5
LOAD (T)	16.0	14.2	12.5	11.0	9.5	8.2	7.0	6.0	5.0	4.0	3.2	2.4
ANGLE	86.0	81.9	77.1	72.2	67.2	62.0	56.4	50.5	44.1	36.8	27.8	12.3



INTERNAL CLIMBING (LADDER)    INTERNAL CLIMBING (3-BEAM)    EXTERNAL CLIMBING

Description		Pos	Qty	L Length (m)	W Width (m)	H Height (m)	Weight per item (kg)
Tower Type 390 (including ladders).		1	-	4.000	2.400	2.400	3500
External Climber	Climbing Cylinder.	2	2	4.915	0.229	0.229	1100
	Side Panel.	3	2	11.520	0.310	2.450	2667
	Tie.	4	2	7.020	0.168	3.200	544
	Climbing Support.	5	2	2.615	0.335	0.800	148
	Access Platform	6	1	3.550	1.073	1.235	199
Internal Ladder Climber	Bottom Climbing Tower (inc Cylinders)	7	1	4.000	2.400	2.400	7750
	Climbing Foot	8	1	2.450	0.350	0.700	1025
	Climbing Ladder	9	?	0.210	0.170	7.985	525
3 - Beam Climber	Bottom Climbing Tower	10	1	4.000	2.400	2.400	5000
	Climbing Beams	11	1	2.400	0.802	0.450	1300
Slew Mount.		12	1	2.550	2.550	2.000	4000
Monorail Beam & Trolley.		13	1	7.430	1.680	1.400	1695
Machinery Deck.		14	1	8.810	3.000	1.150	8000
Cabin.		15	1	1.380	1.100	2.100	1200
Cabin Support.		16	1	4.000	1.335	1.325	330
Counter-weights.		17	8	2.000	1.000	0.160	2500
Mast & Sheaves.		18	1	11.900	2.500	0.640	2500
Mast Ladder.		19	1	8.000	0.812	0.843	178
Mast Platform.		20	1	2.235	1.285	1.175	295
Boom Buffer.		21	1	3.142	0.215	2.100	257
Slew Ring.		22	1	2.235	2.235	0.142	851
Bottom Jib Section.		23	1	9.500	2.400	2.100	1101
Jib Extension Section.		24	1	9.400	2.150	2.150	1430
Jib Extension Section.		25	1	4.800	2.150	2.150	715
Top Jib Section.		26	1	9.400	2.150	2.150	1124
Bridle.		27	1	0.805	0.501	0.704	210
2 - Fall Hook.		28	1	0.900	0.420	1.800	350
Powerpack Winches.		29	1	3.100	1.750	1.950	5000
Hoist Rope.		30	1	300	-	-	700
Split Deck - Front.		31	1	3.630	3.000	1.150	4500
Split Deck - Back.		32	1	4.350	3.000	1.150	3500



FAVELLE FAVCO CRANES  
PTY LTD

28 Yarunga Street Prestons NSW 2170 Australia  
P.O. Box 456 Liverpool NSW 2170 Australia  
Telephone: 61 2 607 0055, 61 2 608 2000  
Facsimile: 61 2 607 0022

Distributed By:

\*Subject to change without notice